

## LETTERS

- D. E. Harrison, J. R. Archer, *Growth Dev. Aging* **52**, 65 (1988).
- E. J. Masoro, S. N. Austad, *J. Gerontol. Ser. A Biol. Sci. Med. Sci.* **51**, B387 (1996).
- D. P. Shanley, T. B. L. Kirkwood, *Evolution* **54**, 740 (2000).
- J. W. Vaupel, J. R. Carey, K. Christensen, *Science* **301**, 1679 (2003).
- S. X. Cao, J. M. Dhahbi, P. L. Mote, S. R. Spindler, *Proc. Natl. Acad. Sci. U.S.A.* **98**, 10630 (2001).
- P. H. Duffy, J. E. A. Leakey, J. L. Pipkin, A. Turturro, R. W. Hart, *Environ. Res.* **73**, 242 (1997).
- C. K. Lee, R. G. Klopp, R. Weindruch, T. A. Prolla, *Science* **285**, 1390 (1999).
- C. K. Lee, R. Weindruch, T. A. Prolla, *Nature Genet.* **25**, 294 (2000).
- E. J. Masoro, Ed., *Caloric Restriction: A Key to Understanding and Modulating Aging* (Elsevier, Amsterdam, 2002).
- F. H. Simmons, T. J. Bradley, *J. Insect Physiol.* **43**, 779 (1997).

## Support for a Colleague

AS COLLABORATORS OF ANDERS PAPE MØLLER, we were shocked and surprised to read that he was accused of data fabrication ("Ecologists roiled by misconduct case," G. Vogel, F. Proffitt, R. Stone, *News of the Week*, 30 Jan., p. 606). We have never had cause to be concerned about any aspect of our collaborations with Møller. He is an amazing scientist, and his great organizational skills are a model for how to be productive in the face of competing time demands. Most of us are capable of much more than we actually accomplish, but we lack the dedication and self-discipline to follow through like Anders Møller. This is the secret of his phenomenal effectiveness that has been so puzzling to the scientific community. His achievements may have caused negative responses from some of his competitors. We would like to see a full, objective, and independent inquiry into the allegations. Our experience tells us that Anders Møller has an exceptionally complete focus on any task at hand, be it fieldwork, data analysis, or paper writing; this, combined with more than a little natural talent, is sufficient to explain his exceptional productivity. We have worked with him on a variety of projects, including collecting data, sometimes under arduous conditions, and in all our dealings with him, his behavior has been beyond reproach. We would ask colleagues to refrain from further public condemnation until such time as any allegations have been proven beyond doubt.

R. V. ALATALO,<sup>1</sup> S. ARAGÓN,<sup>2</sup> J. M. AVILÉS,<sup>3</sup> A. BARBOSA,<sup>3</sup> C. BESSA GOMES,<sup>4</sup> N. CADÉE,<sup>5</sup> P. CHRISTE,<sup>6</sup> J. J. CUERVO,<sup>3</sup> M. DÍAZ,<sup>7</sup> J. ERRITZØE,<sup>8</sup> P. GALEOTTI,<sup>9</sup> L. Z. GARAMSZEGI,<sup>10</sup> D. GIL,<sup>11</sup> M. GONTARD-DANEK,<sup>4</sup> S. LEGENDRE,<sup>12</sup> T. E. MARTIN,<sup>13</sup> J. MARTÍNEZ,<sup>14</sup> M. MARTÍN-VIVALDI,<sup>15</sup> J. G. MARTÍNEZ,<sup>15</sup> S. MERINO,<sup>11</sup> J. MORENO,<sup>11</sup> TIM MOUSSEAU,<sup>16</sup> P. NINNI,<sup>4</sup> M. PETRIE,<sup>17</sup> F. PULIDO,<sup>18</sup> D. RUBOLINI,<sup>9</sup> N. SAINO,<sup>19</sup> J. J. SOLER,<sup>3</sup> M. SOLER,<sup>15</sup> C. SPOTTISWOODE,<sup>20</sup> T. SZÉP,<sup>21</sup> R. THORNHILL,<sup>22</sup> C. ZAMORA,<sup>15</sup> ROBERTO SACCHI<sup>9</sup>

<sup>1</sup>Department of Biological and Environmental Science,

University of Jyväskylä, Surfontie 9, Jyväskylä, 40500 Finland. <sup>2</sup>Laboratoire Endocrinologie Moléculaire, Université Pierre et Marie Curie (Paris VI), Bât. A, 5ème étage, case courrier 29, 7 Quai Saint Bernard, 75252 Paris Cedex 05, France. <sup>3</sup>Departamento de Ecología Funcional y Evolutiva, Estación Experimental de Zonas Áridas (CSIC), Calle General Segura 1, Almería, E-04001 Spain. <sup>4</sup>Laboratoire de Parasitologie Évolutive, CNRS UMR 7103, Université Pierre et Marie Curie (Paris VI), 7 Quai St Bernard, CC 237, Bât. A, 7ème étage, 75252 Paris Cedex 05, France. <sup>5</sup>Glasgow, UK. <sup>6</sup>Institute of Ecology, Laboratory of Zoology and Animal Ecology, University of Lausanne, Biology Building, 1015 Lausanne, Switzerland. <sup>7</sup>Departamento de Ciencias Ambientales, Facultad de Ciencias del Medio Ambiente, Universidad Castilla La Mancha, E-45071 Toledo, Spain. <sup>8</sup>House of Bird Research, Taps Old Rectory, Oedisevej 43, Taps, DK-6070 Christiansfeld, Denmark. <sup>9</sup>Dipartimento de Biologia Animale, Lab Ecoetol, Università degli Studi di Pavia, Piazza Botta 9, I-27100 Pavia, Italy. <sup>10</sup>Department of Biology, Universitaire Instelling Antwerpen, UIA Universiteitsplein 1, B-2610 Wilrijk, Belgium. <sup>11</sup>Departamento Ecología Evolutiva, Museo Nacional Ciencias Naturales, CSIC, José Gutierrez Abascal 2, Madrid, E-28006 Spain. <sup>12</sup>Laboratoire d'Ecologie, Eco-Evolutionary Team, Ecole Normale Supérieure, 46 rue d'Ulm, 75230 Paris Cedex 05, France. <sup>13</sup>U.S. Geological Survey, Biological Resources Division, Avian Studies Program, Montana Cooperative Wildlife Research Unit, University of Montana, Missoula, MT 59812, USA. <sup>14</sup>Departamento de Microbiología y Parasitología, Facultad de Farmacia, Universidad de Alcalá, 28871 Alcalá de Henares, Spain. <sup>15</sup>Departamento de Biología Animal y Ecología, Facultad de Ciencias, Universidad de Granada, Granada, E-18071 Spain. <sup>16</sup>Department of Biological Sciences, University of South Carolina, Columbia, SC 29208, USA. <sup>17</sup>Department of Psychology, Evolution and Behavioral Research Group, University of Newcastle, Newcastle Upon Tyne, Tyne & Wear, NE1 4HH UK. <sup>18</sup>Grupo de Investigación Forestal, Departamento de Biología y Producción de los Vegetales, EIT Forestal, Universidad de Extremadura, Avenida Virgen del Puerto, 2, 10600 Plasencia, Cáceres, Spain. <sup>19</sup>Dipartimento di Biologia, Università di Milano, Milan, I-20133 Italy. <sup>20</sup>Department of Zoology, University of Cambridge, Downing Street, Cambridge CB2 3EJ, UK. <sup>21</sup>Department of Environmental Sciences, College of Nyíregyháza, Nyíregyháza, H-4401 Hungary. <sup>22</sup>Department of Biology, University of New Mexico, Albuquerque, NM 87131, USA.

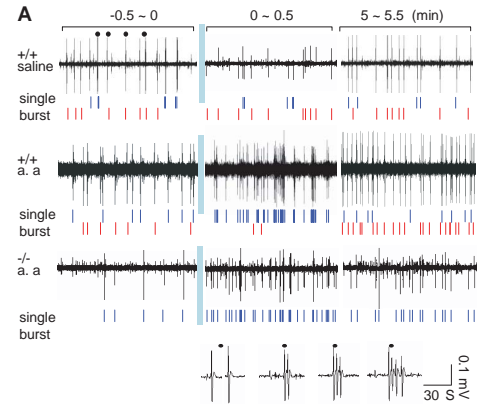
## CORRECTIONS AND CLARIFICATIONS

**Reports:** "Larsen Ice Shelf has progressively thinned" by A. Shepherd *et al.* (31 Oct., p. 856). There were two errors in the printed form of Equation 1: an incorrect expression of the density-related factor of the mass fluctuation terms and an incorrect expression of the mass flux divergence. The correct equation, which the authors used in their analysis, appears below.

$$\frac{\partial h}{\partial t} = \frac{\partial \Delta_s}{\partial t} - M \frac{\partial}{\partial t} \left( \frac{1}{\rho_w} \right) + \int_0^M dm \frac{\partial}{\partial t} \left( \frac{1}{\rho_f(m)} \right) + \left( \frac{1}{\rho_{ice}} - \frac{1}{\rho_w} \right) (\dot{M}_s + \dot{M}_b + \nabla \cdot (Mv))$$

The authors thank David Holland for bringing these errors to their attention.

**Report:** "Thalamic control of visceral nociception mediated by T-type Ca<sup>2+</sup> channels" by D. Kim *et al.* (3 Oct., p. 117). In Fig. 3A, four panels were reversed to white on black. The correct image is shown here.



**Reports:** "A microRNA as a translational repressor of *APETALA2* in *Arabidopsis* flower development" by X. Chen (*Science Express*, published online 31 July; 10.1126/science.1088060). A second revision to this Report was posted on *Science Express* on 25 February 2004. This revision included changes both to the second version of the Report itself and to the Supporting Online Material accompanying the Report. This revision corrects a previous error in the paper. In engineering silent mutations into the miRNA172 binding site in the *AP2* cDNA, an amino acid change was inadvertently introduced. New experiments indicate that the mistake does not alter the conclusions of the paper. The corrected PDF of the *Science Express* article (including a list of the corrections made) can be found at [www.sciencemag.org/cgi/rapidpdf/1088060v3.pdf](http://www.sciencemag.org/cgi/rapidpdf/1088060v3.pdf); the corrected Supporting Online Material, including an explanation of the corrections made, can be found at [www.sciencemag.org/cgi/content/full/1088060/DC1](http://www.sciencemag.org/cgi/content/full/1088060/DC1). This latest version is the most recent version and supersedes all other versions. The Report will appear in print in the 26 March issue.

**Research Articles:** "A comparison of whole-genome shotgun-derived mouse chromosome 16 and the human genome" by R. J. Mural *et al.* (31 May 2002, p. 1661). On p. 1662, third column, second paragraph, the second sentence, "Seven BACs from the Cat eye syndrome region on chromosome 16 (15) have been sequenced..." should have read "Several BACs from the Cat eye syndrome region on chromosome 6 (15) have been sequenced..." The alignment of these BACs to the corresponding Celera scaffold (GA\_x5J8B7W4YGF) in Fig. 1 was meant to illustrate the correspondence of whole-genome shotgun assembled scaffolds to "finished" BACs. This mislabeling in no way affects the validity of that result.